



MIAMI

PRODUCTION TRAILERS



The best equipped and high-performance production, talent and Motorhome units.

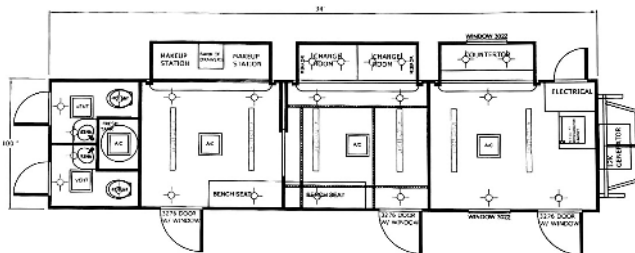




MPT01 34' | PRODUCTION TRAILER

34' MPT01 Production Trailer Highlights

- Wifi and USB charger
- Production Office
- Make-up Room
- Wardrobe
- 2 rear Restrooms with AC
- Slide outdoors for all 3 stations
- Electrical awning to cover all three service doors
- 12k Diesel Generator





Production Office

- Length 9 ½ | Width 11"
- 5 workstations with double desks and 4 chairs + 1 folding chair
- 8 outlets with USB charger
- WiFi
- Independent AC unit
- 3 cabinets for storage

Make-up Room

- 2 make up stations with chairs
- Each station with a led light on each side and a sliding drawer
- 3 drawers to store accessories or tools
- Comfortable large storage bench
- Independent AC unit
- Sliding door to separate it from the wardrobe station
- 4 outlets with USB



Wardrobe Room

- Length 8 ½ | Width 11"
- 2 fitting rooms with mirrors
- Thick privacy curtains
- 4 outlets with USB charger
- WiFi and independent AC unit
- Adjustable stainless steel double rack
- 6 racks along the entire perimeter of the room
- Steamer
- Sittin bench, folding table and chair





RIVER | TALENT MOTORHOME

RIVER 34' ***Talent Motorhome Highlights***

- Double Slide 34' Motorhome
- Make-up Room with 2 make up stations with chairs, mirror, led lights, drawers and cabinets
- 2 Wardrobe
- Full Bathroom
- 2 office station with desk, chairs, drawers and cabinets
- Sofa
- Dinning room
- Refrigerator and microwave
- 2 A/C Units
- TV
- Wifi
- 50 AMP Conection







M-Forest | TALENT RV

2023 M-Forest Talent RV Highlights

- 36 feet Talent RV with dual entry
- Make-up Room station with chair, led lights, drawers, and futon
- Bathroom equipped with shower ,with own exterior entry door
- Wardrobe with stainless steel rack, chairs, and doors for privacy
- 39" LED TV , WiFi and USB chargers
- Storage space and multiple sockets
- Slide outdoors
- Electrical awning with led light
- 12k Diesel Generator
- Dining table
- Tri-fold sofa
- Solid Surface Countertops
- Kitchen Sink / Sink covers
- 3-burner cooktop
- Electric Refrigerator
- Stainless Steel Oven
- Convection Microwave
- Dual ducted A/C system







RIVER | TALENT MOTORHOME

RIVER 34' ***Talent Motorhome Highlights***

- Double Slide 34' Motorhome
- Make-up Room with 2 make up stations with chairs, mirror, led lights, drawers and cabinets
- 2 Wardrobe
- Full Bathroom
- 2 office station with desk, chairs, drawers and cabinets
- Sofa
- Dinning room
- Refrigerator and microwave
- 2 A/C Units
- TV
- Wifi
- 50 AMP Conection







NEWMAR VENTANA | TALENT RV

NEWMAR VENTANA Class A 43' Talent RV Highlights

- Triple slides
- 1 full bath
- ½ bath with a toilet, sink, linen cabinet and overhead storage
- Buffet dinette with the LED TV
- Hide-a-bed sofa
- Kitchen area with sink, three burner range, microwave, pantry and refrigerator
- Master Bedroom area with king size bed, overhead cabinet, two wardrobes, an overhead TV, and a chest of drawers.
- Master bathroom with a corner shower, toilet, sink, medicine cabinet, and wardrobe with bi-fold door.

Other Specs:

Horsepower 400 hp @ 2,100 RPM
Fuel Type Diesel Regular
Transmission Type 6 Speed Automatic
Length 43 ft
Width 8.46 ft. (101.5 in.)
Height 12.92 ft. (155 in.)
Interior Height 7 ft. (84 in.)
Fresh Water 1 Tank Capacity 105.0 gal.
Gray Water Tanks 1 (65.0) gal.
Black Water Tank 1 Capacity 45.0 gal.
Propane 1 Tank Capacity 32.gal.- 136 lbs



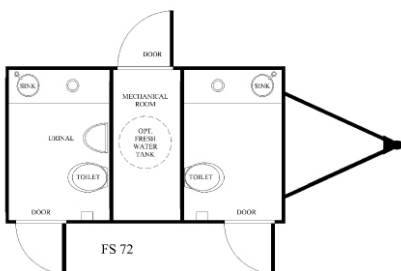




MS1 | RESTROOM TRAILER

MS1 Restroom station Highlights

- 2 station Restroom trailer
- Length: 16'
- Width: 6' Height: 11'
- Men's room: 1 toilet, 1 urinal, 1 sink
- Women's room: 1 toilet, 1 sink
- Modern interior design
- Hard surface countertops
- Private exterior entrances
- Climate control
- Flushing toilets
- Running water sinks
- Waste tank: 275 gal
- Water tank: 105 gal.







Contact us for detailed information about our complete portfolio of production, talent and motorhomes units , quotes and availability.

P: 305 833 1313
info@miamiproductiontrailers.com